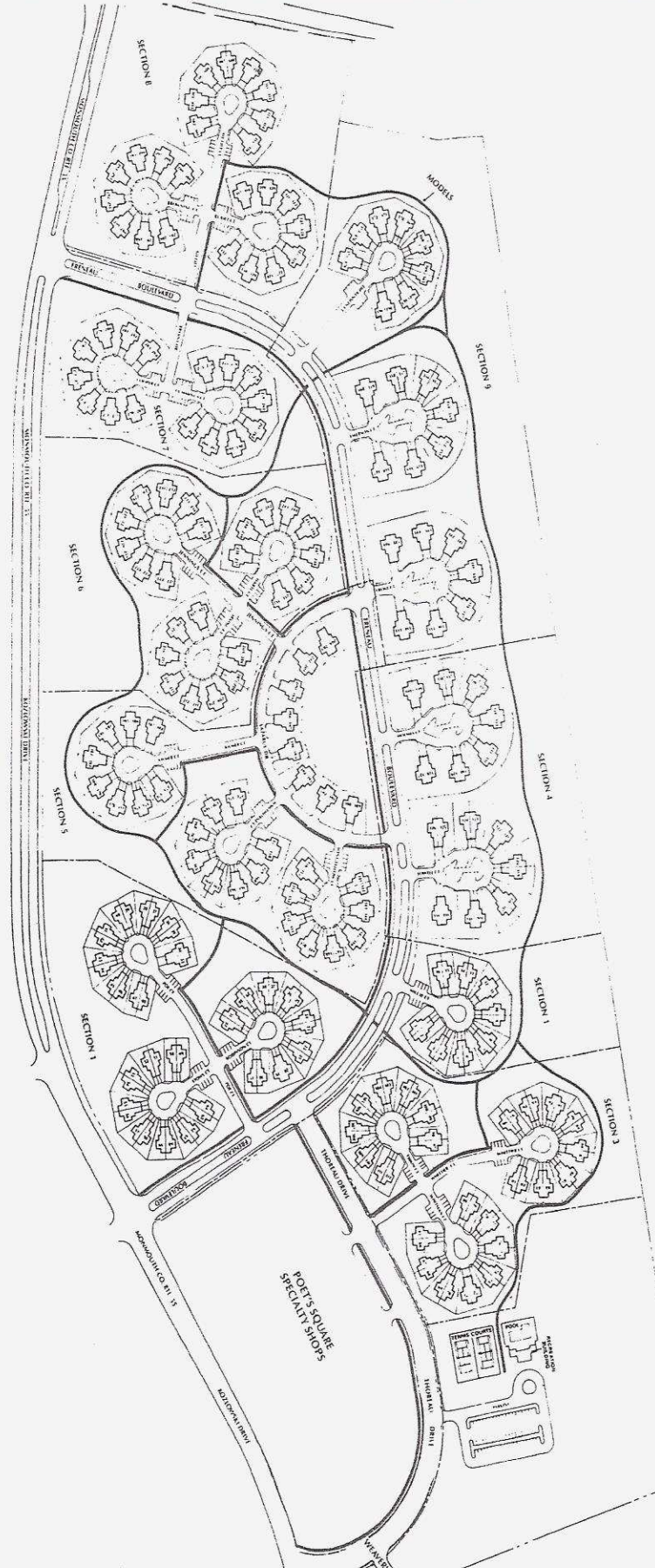


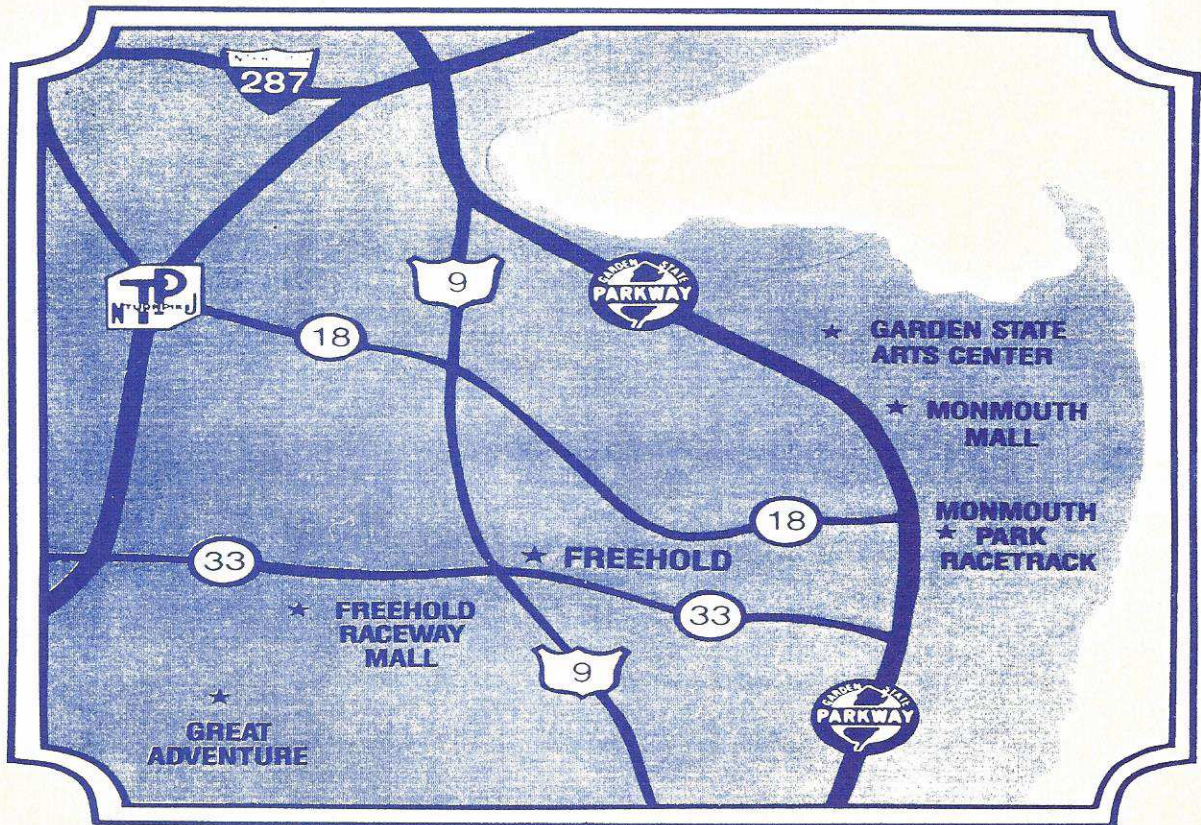
Poet's Corner

Freehold, New Jersey

Site Plan



At the Crossroads of New Jersey



Poet's Corner is situated midway between New York City and Philadelphia, literally at the crossroads of New Jersey, in Freehold.

Many fine shopping areas surround Poet's Corner as do a number of outstanding dining facilities. The combination of these modern conveniences and rural charm merely demonstrates how it is possible to maintain a community of elegance without the accession of noise and congestion.

Here are some more reasons why Poet's Corner should become your new home:

- Poet's Corner offers you a unique combination of colonial charm and modern living.
- A complete range of educational facilities.
- Nearby recreational facilities including fresh and saltwater fishing, golf and horse racing.
- Many state and county parks.
- Excellent transportation systems.
- Close proximity to New York City (less than an hour); Philadelphia (one hour); Trenton (35 minutes); Newark International Airport (45 minutes) and Seashore Resorts (20 minutes).

DIRECTIONS TO POET'S CORNER: FROM NORTH JERSEY, NEW YORK - N.J. Turnpike South to exit 11; to Garden State Parkway South to exit 123; to Route 9 South; to Route 18 South; to exit 537 West Freehold to first traffic light; turn left onto Kozloski Road. Go ½ mile to Poet's Corner on left.

FROM PRINCETON - HIGHTSTOWN AREA - East on Route 33 to Halls Mill Road North; Poet's Corner is 1 mile on right.

FROM NEW JERSEY SHORE AREA - Garden State Parkway to exit 100B; take Route 33 West approx. 8 miles to first traffic light; turn right onto Kozloski Road. Poet's Corner is ½ mile on right.

